



SDRQ 2017 Calendar

Event		Details
February		
3 rd -5 th	Stanthorpe Agricultural Show	TBC
26 th	Dogs Day Out : Gold Coast	Pizzey Park Mermaid Waters 2pm -4:30pm
March		
5 th	Dogs Day Out: Toowoomba	Norman Park 2pm – 4:30pm
19 th	Dogs Day Out: Brisbane	Meadowbrook Parklands 2pm – 4:30pm
30 th -1 st	Royal Toowoomba Show	TBC
April		
14 th – 17 th	Scoot Camp 101: Stanthorpe	11am Friday-12pm Monday
29 th -1 st	Scoot Camp 102: Benarkin	11am Friday-12pm Monday
May		
5 th – 6 th	Stanthorpe Training Run	Drivers meet 5:30pm Saturday , 6pm Start
20 th - 21 st	Pechey Training Run	Drivers meet 5:30pm Saturday , 6pm Start
27 th - 28 th	Stanthorpe Race 1 SDRQ Pointscore	Drivers meet 5:30pm Saturday , 6pm Start
June		
3 rd -4 th	<i>Margaret River: Running West</i> AFSS Pointscore	<i>Western Australia</i>
3 rd -4 th	Benarkin Training Run	Drivers meet 5:30pm Saturday , 6pm Start
10 th - 11 th	Pechey Race 2 SDRQ Pointscore	Drivers meet 5:30pm Saturday , 6pm Start
17 th – 18 th	<i>NSW Siberian Express</i> AFSS Pointscore	<i>Wingello State Forest NSW</i>
24 th - 25 th	<i>NEGRC Northern Challenge</i> ASSA Pointscore	<i>Tenterfield NSW</i>
July		
1 st -2 nd	Stanthorpe Training and Snowflake Festival	Festival Start TBC Drivers meet 5:30pm Saturday , 6pm Start
8 th – 9 th	<i>Wild Dog Derby</i> AFSS Pointscore	<i>South Australia</i>

15 th - 16 th	Benarkin Race 3 SDRQ Pointscore	Drivers meet 5:30pm Saturday , 6pm Start
22 nd - 23 rd	Benarkin Training Run Muster Track Prep	Track prep begins 11am Saturday Drivers meet 5:30pm Saturday , 6pm Start
28 th – 30 th	2 nd Annual Red Mile Muster SDRQ, AFSS, IFSS Pointscore	Registration opens 5pm Friday 28 th Drivers Meet 5:30 am Saturday 29th
August		
3 rd - 17 th	Dinnerplain A5K Club Road Trip	TBC
19 th – 20 th	Canberra Sled Dog Club Classic AFSS Pointscore	Kowen Forest, Queanbeyan, ACT
26 th – 27 th	Pechey Training Run	Drivers meet 5:30pm Saturday , 6pm Start
September		
2 nd -3 rd	Pechey Race 5 SDRQ Pointscore	Drivers meet 5:30pm Saturday , 6pm Start
9 th – 10 th	Stanthorpe Training Run	Drivers meet 5:30pm Saturday , 6pm Start
October		
30 th – 2 nd	Stanthorpe End of Season Closer	Starts miday



Directions:

Brisbane to Benarkin Forest
145km, 1hr 48mins

From Brisbane take the Bruce H'way north, left at Caboolture. D'Aguiar Highway at Exit 85. Continue through Woodford, Kilcoy. Benarkin Forest 4.5km from Blackbutt.

Trail access: Forest Drive.
Left into Benarkin Forest. 1.1km

Surface: Gravel to clay surface.
Gradient: Average 3.5%
Elevation: Rise/Fall 25m max
Altitude: 460m

Accommodation:

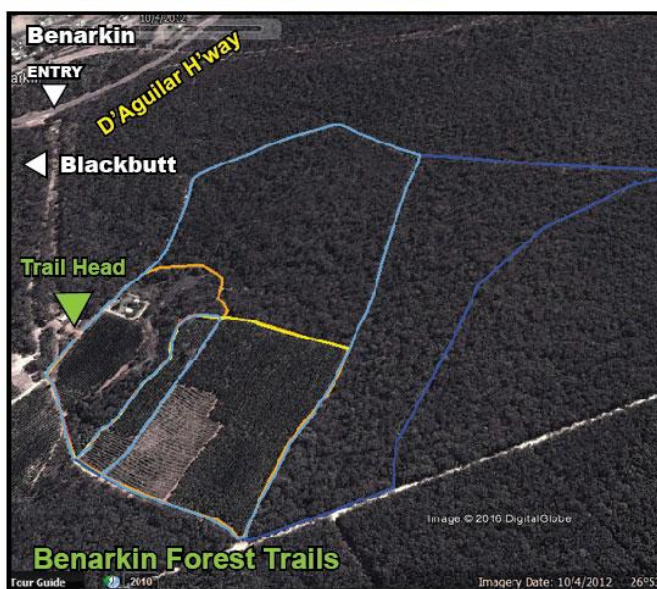
Blackbutt Showgrounds camping, power, water toilets. SDRQ booking. 4.5km to Benarkin Forest.

Benarkin BVRT rest stop (free).
Toilets, water. 1.3km.

Clancys camping area, Benarkin Forest on Emu Creek.
14km from Benarkin forest turn.

Benarkin Forest Trails

Benarkin State Forest, Blackbutt Qld





Passchendaele Forest Trails

Passchedaele State Forest, Stanthorpe Qld

Directions:

Brisbane to Stanthorpe
250km, 2hrs 30minutes
Dalveen to Passchendaele Forest
20km, 22 minutes
Stanthorpe to Passchendaele Forest
24km, 21mins

From Brisbane, Ipswich M'way, turn left Cunningham H'way, through Warwick, turn right onto Amiens Rd at Thulimbah, 13.5km to turn off.

Trail access:

Amiens Rd. Turn left opposite Passchendaele Rd. 13.5kms from New England H'way. Follow the signs.

Surface: Abrasive, granite/quartzite.
Gradient: Average 4.5%
Elevation: Rise/Fall 50m max
Altitude: 910m

Accommodation:
Dalveen rest area, water & toilets.
(Stanthorpe showgrounds TBN)



Pechey Grapetree Rd Trails

Pechey State Forest (Sharman), Hampton Qld

Directions:

Brisbane to Pechey Forest
150km, 1hr 50mins
Crows Nest to Pechey Forest
9km, 6mins

From Brisbane take the Ipswich M'way. Via Esk take the Brisbane Valley H'way, Esk-Hampton Rd, north on the New England H'way to Pechey Forest. Via Toowoomba north on the New England H'way to Geham Forest.

Trail access:
Grapetree Rd. Follow the signs. 550m

Surface: Forest litter, red soil.
Gradient: Average 3%
Elevation: Rise/Fall 18m max
Altitude: 690m

Accommodation:

Crows Nest Carvan Park.
Dog friendly camping and cabins.
9km to Geham Forest.

Hampton rest stop (free). Toilets.
3km to Pechey Forest.

